



ENKAEOS
Elektrik Elektronik A.Ş.



HYDROPHORE CONTROL PANELS

PRODUCTION CATALOGUE

HYDROPHORE CONTROL PANELS

HYDROPHORE CONTROL PANELS



SYSTEM FEATURE

- Solenoid valve outlet.
- Motor protection fuses.
- Weekly adjustable test.
- Pump replacement after each run.
- Main cutter with locking mechanism.
- Sequential operation according to water requirement.
- Pump stops when there is no water in the suction.
- Delay during commissioning of the 2nd and 3rd pumps.
- Green LED for Engine Running signal / Red LED for faults.

CONTROL PANEL & INTERNAL VIEW



WARNING LIGHTS

PUMP CONTROL
BUTTONS

PHASE PROTECTION
RELAY

HYDROPHORE
RANKING RELAY

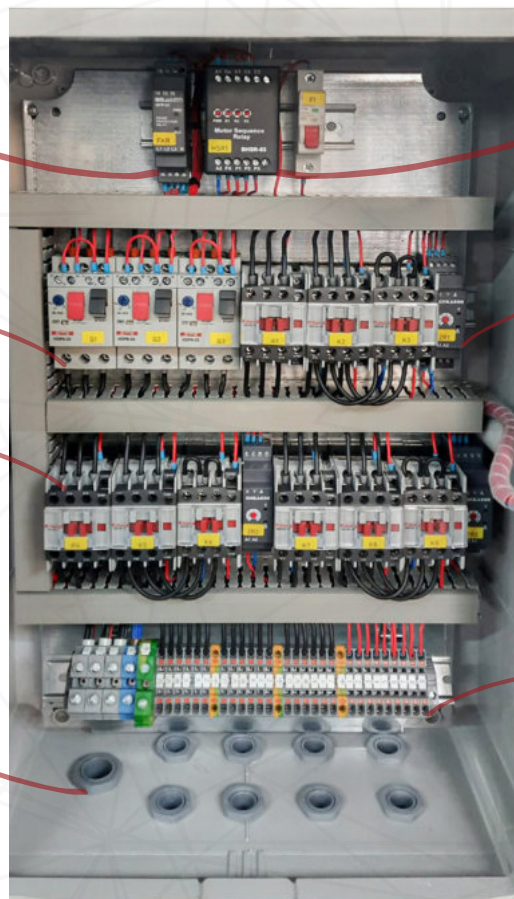
MOTOR PROTECTION

STAR TRIANGLE
RELAY

CONTACTORS

OUTPUT RECORDS

ENGINE
TERMINALS



PANEL DIMENSIONS

1 Pump

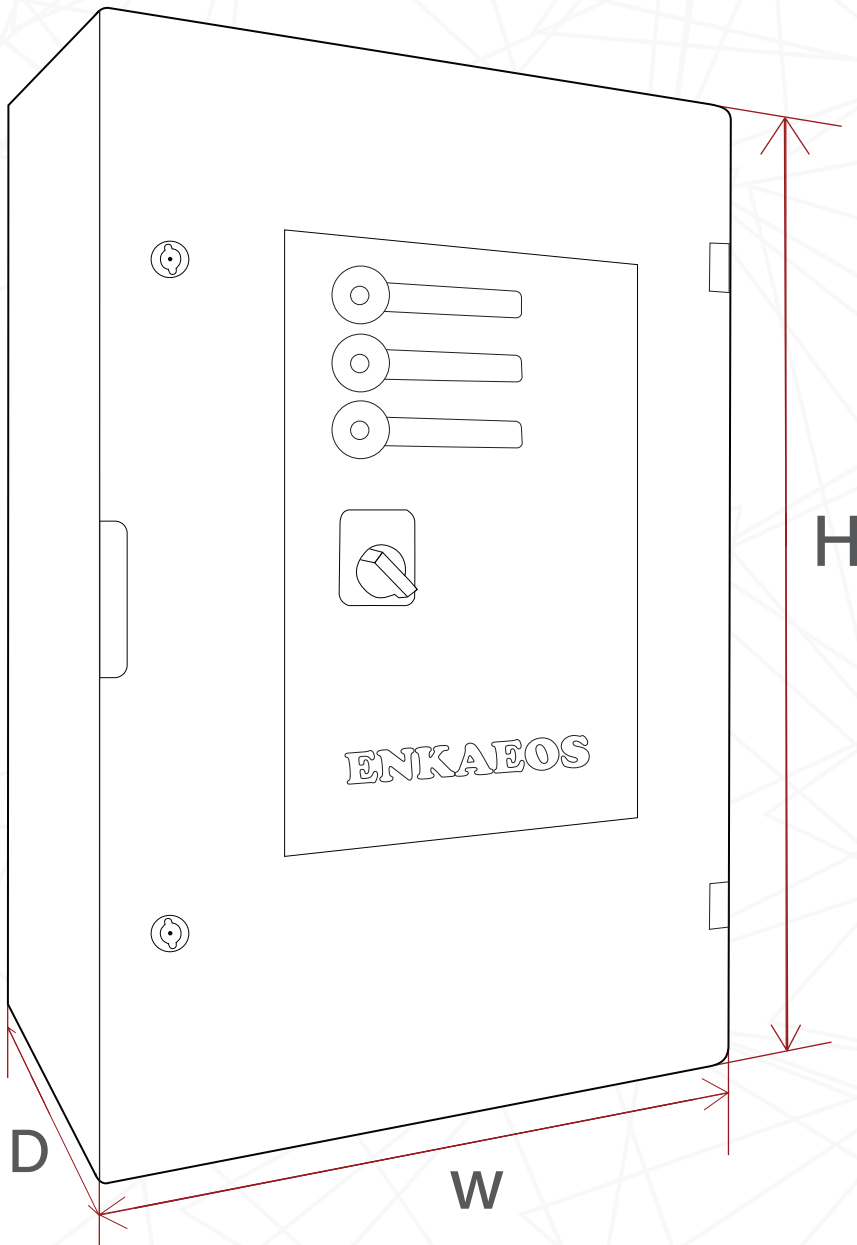
KW	W	H	D
7,5kW	400mm	500mm	200mm
11kW	400mm	500mm	200mm
15kW	400mm	500mm	200mm
18,5kW	400mm	500mm	200mm
22kW	400mm	500mm	200mm
30kW	400mm	600mm	200mm
37kW	400mm	600mm	200mm
45kW	400mm	600mm	200mm

2 Pump

KW	W	H	D
7,5kW	400mm	600mm	200mm
11kW	400mm	600mm	200mm
15kW	400mm	600mm	200mm
18,5kW	500mm	700mm	240mm
22kW	500mm	700mm	240mm
30kW	600mm	800mm	260mm
37kW	600mm	800mm	260mm
45kW	600mm	800mm	260mm

3 Pump

KW	W	H	D
7,5kW	400mm	600mm	200mm
11kW	400mm	600mm	200mm
15kW	500mm	700mm	240mm
18,5kW	600mm	800mm	260mm
22kW	600mm	800mm	260mm
30kW	700mm	1000mm	260mm
37kW	700mm	1000mm	260mm
45kW	700mm	1000mm	260mm





ENKAEOS
Elektrik Elektronik A.Ş.

Address: Dudullu OSB mah, İmes Sanayi Sitesi C-302. Sk No:11,
34775 Ümraniye/İstanbul

Phone: 0216 364 08 88

Mail: enkaeos@gmail.com

www.enkaeos.com