



ENKAEOS
Elektrik Elektronik A.Ş.



SOFTSTARTER CONTROL PANEL

PRODUCTION CATALOGUE

SOFTSTARTER CONTROL PANEL

SOFTSTARTER CONTROL PANEL



SYSTEM FEATURE

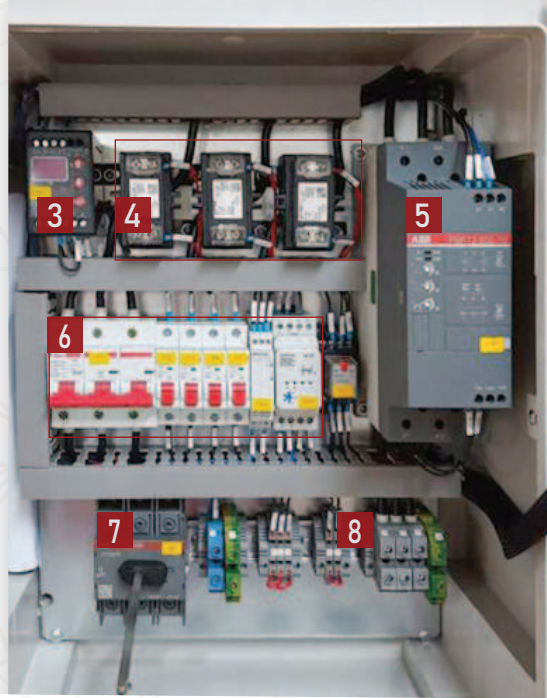
- Auto Manual selection key.
- Soft stop with voltage ramp.
- Soft start with voltage ramp.
- Possibility to set fault delay time.
- Operating voltage: 208 - 600 V AC.
- Wide control supply voltage: 100 - 240 V.
- Informing fault conditions with relay contact.
- Ability to see the stress values on the screen.
- Protection with floater against waterless operation.
- General Error / Waterless Operation signal warning leds.
- Wide rated control supply voltage: 100 - 250V, 50/60 Hz.
- To be able to see the pump current values on the screen.
- Ability to set High Voltage and Low Voltage protection values.
- Communication with FieldBusPlug and FieldBusPlug adapter.
- To be able to monitor the pump working hours on the screen.
- Internal bypass providing energy saving and ease of installation.

CONTROL PANEL & INTERNAL VIEW



Kullanılan Malzemeler

- 1) Control Panel
- 2) Paco Switch
- 3) Motor Protection
- 4) Current Transformer
- 5) Soft Starter
- 6) Fuses
- 7) Paco Switch
- 8) Output Terminals





ENKAEOS
Elektrik Elektronik A.Ş.

Adres: Dudullu OSB mah, İmes Sanayi Sitesi C-302. Sk No:11,
34775 Ümraniye/İstanbul
Tel: 0216 364 08 88
Mail: info@enkaeos.com

www.enkaeos.com